

VACCI**Check**[®] by **Biogal** Galed Labs.

A reliable and scientifically
proven in-house antibody
titer testing solution





VacciCheck proudly holds prestigious certifications from leading authorities worldwide, highlighting its exceptional quality and reliability.

- ▶ USDA
- ▶ Canadian Food Inspection Agency
- ▶ Japanese Ministry of Agriculture, Food and Fisheries
- ▶ ANVISA (National Health Surveillance Agency, Brazil)
- ▶ ISO 9001:2015, ISO 13485:2016

DIAGNOSTIC METHOD

Serology Dot-ELISA detects specific antibodies in a blood sample, indicating immunity to exposure or vaccination.

BENEFITS

- ▶ Easy to use
- ▶ Fast results
- ▶ Accurate
- ▶ Semi-quantitative
- ▶ Proven reliability supported by scientific evidence
- ▶ Cost-effective
- ▶ High sensitivity and specificity

APPLICATIONS

- ▶ Verifies immune response after the initial vaccination cycle in young pets
- ▶ Assists veterinarians in determining if senior, immunocompromised, or chronically ill companion animals need a booster vaccine
- ▶ Tests immunity levels in pets with an unknown vaccination history
- ▶ Supports outbreak management in shelters and breeding facilities

PERFORMANCE DATA

Canine Vaccicheck

Virus	Sample Size	Sensitivity	Specificity	Gold Standard Method
Canine Adenovirus CAV (ICH)	166	94%	93%	Virus Neutralization (VN)
Canine Parvovirus CPV	186	88%	100%	Hemagglutination Inhibition (HI)
Canine Distemper CDV	199	100%	92%	Virus Neutralization (VN)

Clinical study conducted in 2015 at Professor Schultz's lab, Department of Pathobiological Sciences, School of Veterinary Medicine, University of Wisconsin-Madison.

Feline Vaccicheck

Virus	Sample Size	Sensitivity	Specificity	Gold Standard Method
Feline Calici Virus FCV	344	90%	91%	Virus Neutralization (VN)
Feline Herpesvirus FHV	344	93%	96%	Virus Neutralization (VN)
Panleukopenia Virus FPLV	344	89%	98%	Hemagglutination Inhibition (HI)

Clinical Study conducted in 2013 at The Medicine and Biomedical Sciences lab in the College of Veterinary, Colorado State University. The Department of Small Animal Clinical Sciences lab in the College of Veterinary Medicine, University of Florida. Cornell University Animal Health Diagnostic Center.

Scan
for more
info



VacciCheck – Quick Guide

Scan
for IFU



STEP 1

Bring all components to room temperature 20°C - 25°C

STEP 3

Insert the Comb into the well A with the sample, incubate and transfer to the remaining wells (B-F) at timed intervals according to the step by step instructions

STEP 2

Deposit serum (5 µl), or whole blood (10 µl) into a well in row A

STEP 4

Dry and read the results

Step-by-Step Procedure

Reagents	Row	Incubation time [min]
Sample	A	5
Wash	B	2
Conjugate	C	5
Wash	D	2
Wash	E	2
Chromogen	F	5
Wash	Back to E	2

Upon completion, a purple-grey color appears on Positive Reference spots and positive sample spots, indicating antibody levels based on intensity.

Reading and interpreting the IgG antibody results

Score	Result	Immunity status	Recommendation
S0-S1	Negative	Poor Immunity	Vaccination Required
S2	Weak Positive	Adequate Immunity	The dog will not benefit from repeated vaccination
S3-S4	Positive	Good Immunity	
S5-S6	High Positive	Excellent Immunity	

READING THE RESULTS

Via CombScale

Match the positive reference spot color to the Comb scale. Slide C3+ to this color and compare each dot individually, noting the values

Via CombCam:

“Electronic Eye” reads VacciCheck semi-quantitatively



JAVMA



A point-of-care dot blot ELISA assay for detection of protective antibody against canine adenovirus, canine parvovirus, and canine distemper virus is diagnostically accurate

Azizeh Egerer, BS; Zoie Schaefer, DVM; Laurie Larson, DVM*

Companion Animal Vaccines and ImmunoDiagnostic Service Laboratory, Department of Pathobiological Sciences, School of Veterinary Medicine, University of Wisconsin-Madison, Madison, WI

*Corresponding author: Dr. Larson (Laurie.Larson@wisc.edu)

doi.org/10.2460/javma.22.05.0224

Scan for full article



"The overall accuracy of 93.43% to 95.91% for this test provides confidence in its reliable use in the routine screening of previously vaccinated dogs over 20 weeks of age to determine the benefit of administering a 'booster' core vaccine."

Table 1—The sensitivity, specificity, and accuracy analysis of the index test for canine adenovirus (CAV), canine parvovirus (CPV), and canine distemper virus (CDV).

Virus	Sensitivity (95% CI)	Specificity (95% CI)	Accuracy (95% CI)
CAV n = 183 Pet dogs only	96.03% (91.55%–98.53%)	90.62% (74.98%–98.02%)	95.08% (90.87%–97.73%)
CPV n = 563 Pet and spf dogs	96.75% (94.39%–98.31%)	94.33% (90.08%–97.14%)	95.91% (93.93%–97.39%)
CDV n = 563 Pet and spf dogs	96.12% (93.69%–97.81%)	87.50% (81.69%–92.00%)	93.43% (91.05%–95.33%)

spf = Specific pathogen-free.

ANTIBODY TESTING VS VACCINATION
APPLICATIONS IN CLINICAL PRACTICE



RICHARD B. FORD.
PROFESSOR OF MEDICINE DIPLOMATE
ACVIM AND ACVPM (HON)



Scan for full article



Canine	
Adenovirus	In-clinic titer test results correlate well with gold standard testing (VN).
Distemper virus	In-clinic titer test results correlate well with gold standard testing (VN).
Parvovirus	In-clinic titer test results correlate well with gold standard testing (HI).

"Understanding when serological testing is indicated, and knowing what actions to take based on positive or negative results, is fundamental. With strong correlation between positive antibody test results and protection, serological testing becomes a crucial and reliable tool for managing individual patients."



Article

Prevalence of Serum Antibody Titers against Core Vaccine Antigens in Italian Dogs

Paola Dall'Ara ^{1,*}, Stefania Lauzi ¹, Jari Zambambieri ¹, Francesco Servida ², Laura Barbieri ³, Roberto Rosenthal ⁴, Lauretta Turin ¹, Elena Scarparo ¹ and Joel Filipe ¹

¹ Department of Veterinary Medicine and Animal Sciences (DIVAS), University of Milan, Via dell'Università 6, 26900 Lodi, LO, Italy

² Clinica Veterinaria Pegaso, Via Dante Alighieri 169, 22070 Rovello Porro, CO, Italy

³ Clinica Veterinaria Turro, Via Gerolamo Rovetta 8, 20127 Milano, MI, Italy

⁴ Ambulatorio Veterinario di Favignana, Via Daniele Manin, 10, 91023 Favignana, TP, Italy

* Correspondence: paola.dallara@unimi.it

"Antibody titer tests such as VacciCheck may be very useful in monitoring canine immunity specific for core vaccines."

"VacciCheck is the only one recommended by WSAVA and AAHA and the only one officially approved by regulatory authorities in USA, Canada, Japan, Brazil, and other countries."

Scan
for full article



PAPER

Long-lived immunity to canine core vaccine antigens in UK dogs as assessed by an in-practice test kit

R. KILLEY*, C. MYNORS*, R. PEARCE*, A. NELL[†], A. PRENTIS[‡] AND M. J. DAY^{§,1}

*Moreton Morrell College, Moreton Morrell, Warwickshire, CV35 9BL, UK

[†]Medivet, Watford, Hertfordshire, WD24 7UY, UK

[‡]Hyde Park Veterinary Centre, London, W2 2AE, UK

[§]School of Veterinary Sciences, University of Bristol, Langford, North Somerset, BS40 5DU, UK

¹Corresponding author email: profmjday@gmail.com

"Serological testing, such as that undertaken with in-practice kits, can readily identify the rare individual dogs who may not have responded to a specific vaccine antigen."

Scan
for full article



Article

Effect of Aging on the Immune Response to Core Vaccines in Senior and Geriatric Dogs

Paola Dall'Ara ^{1,*}, Stefania Lauzi ¹, Lauretta Turin ¹, Giulia Castaldelli ¹, Francesco Servida ² and Joel Filipe ^{1,*}

¹ Department of Veterinary Medicine and Animal Sciences (DIVAS), University of Milan, Via dell'Università 6, 26900 Lodi, Italy; paola.dallara@unimi.it (P.D.); lauretta.turin@unimi.it (L.T.)

² Clinica Veterinaria Pegaso, Via Dante Alighieri 169, 22070 Rovello Porro, Italy; francesco.servida@guest.unimi.it

* Correspondence: joel.soares@unimi.it; Tel.: +39-02503-34341

"Antibody titration (e.g., with VacciCheck) may be a very useful tool in monitoring canine immunity and could become a standard of care in such a delicate period of the dogs' life."

Scan
for full article





**Designed for the efficient development of
VacciCheck test kit**

KEY BENEFITS

- ▶ Maximize productivity
- ▶ Increased efficiency
- ▶ Does not require trained personnel
- ▶ Simple to use
- ▶ Carried out in the comfort of your clinic

FEATURES

- ▶ LCD touch screen
- ▶ Multi languages
- ▶ Built in plate warmer
- ▶ Trusted biological accuracy
- ▶ Protective cover
- ▶ Magnetic comb and paper strip holder
- ▶ Digital instructions for use
- ▶ Factory calibrated



CombCam

**Makes the reading of the results simple,
faster, and more accurate**

- ▶ Hand sized, user friendly reader.
- ▶ Reads individually one tooth at a time.
- ▶ Result displayed after 3 seconds.
- ▶ Test results can be copied to a PC or a laptop for electronic documentation.



➤ Step 01

Use appropriate RFID
card with CombCam



➤ Step 02

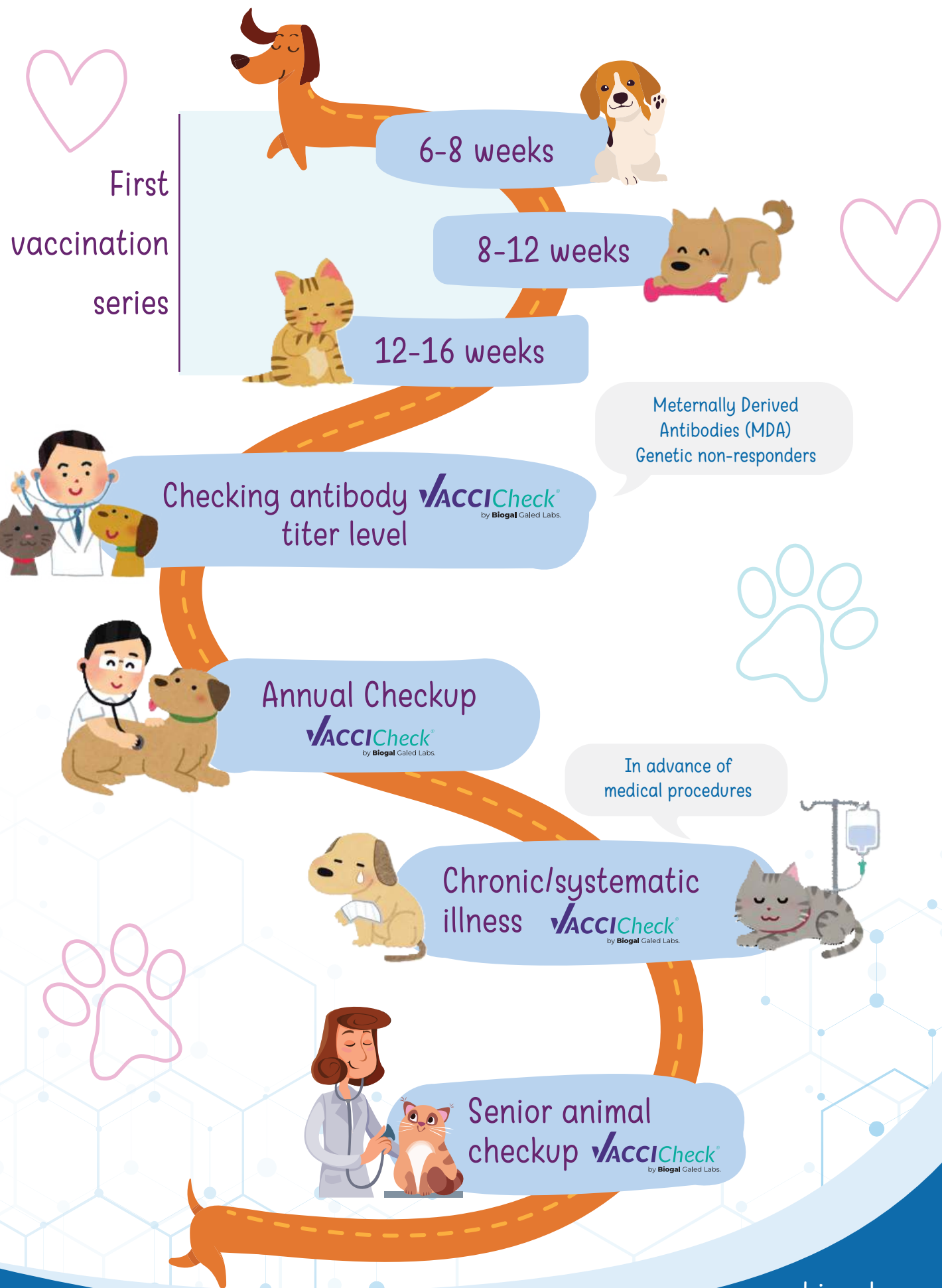
Insert ImmunoComb
or VacciCheck Tooth



➤ Step 03

Read Result via
CombCam Cube or
PC Software

Road map to ensure your pet's protection



Manufactured by



Biogal Galed Labs.

CONTACT

Biogal Galed Labs, Kibbutz Galed,
1924000 Israel

Tel: +972 (0)4 9898605

Email: info@biogal.com



For more information, visit our site
www.biogal.com